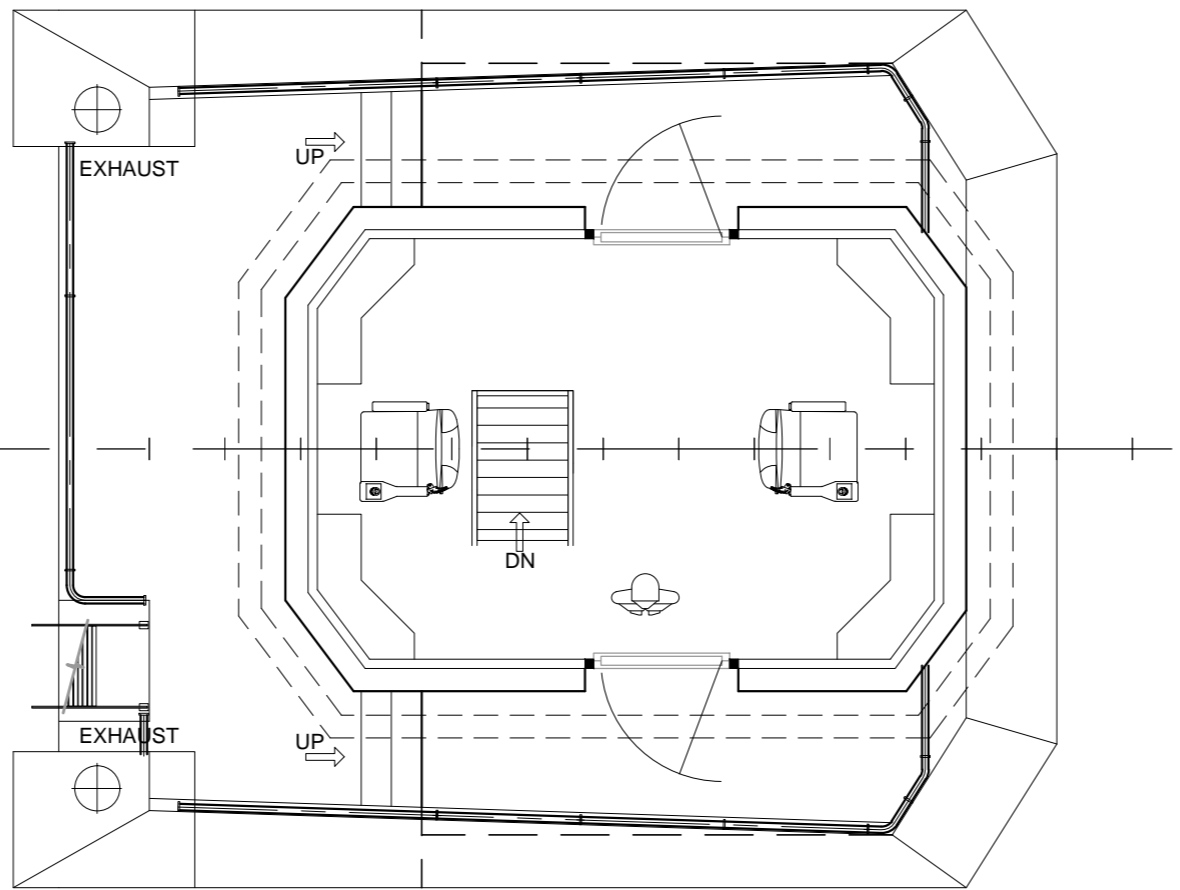
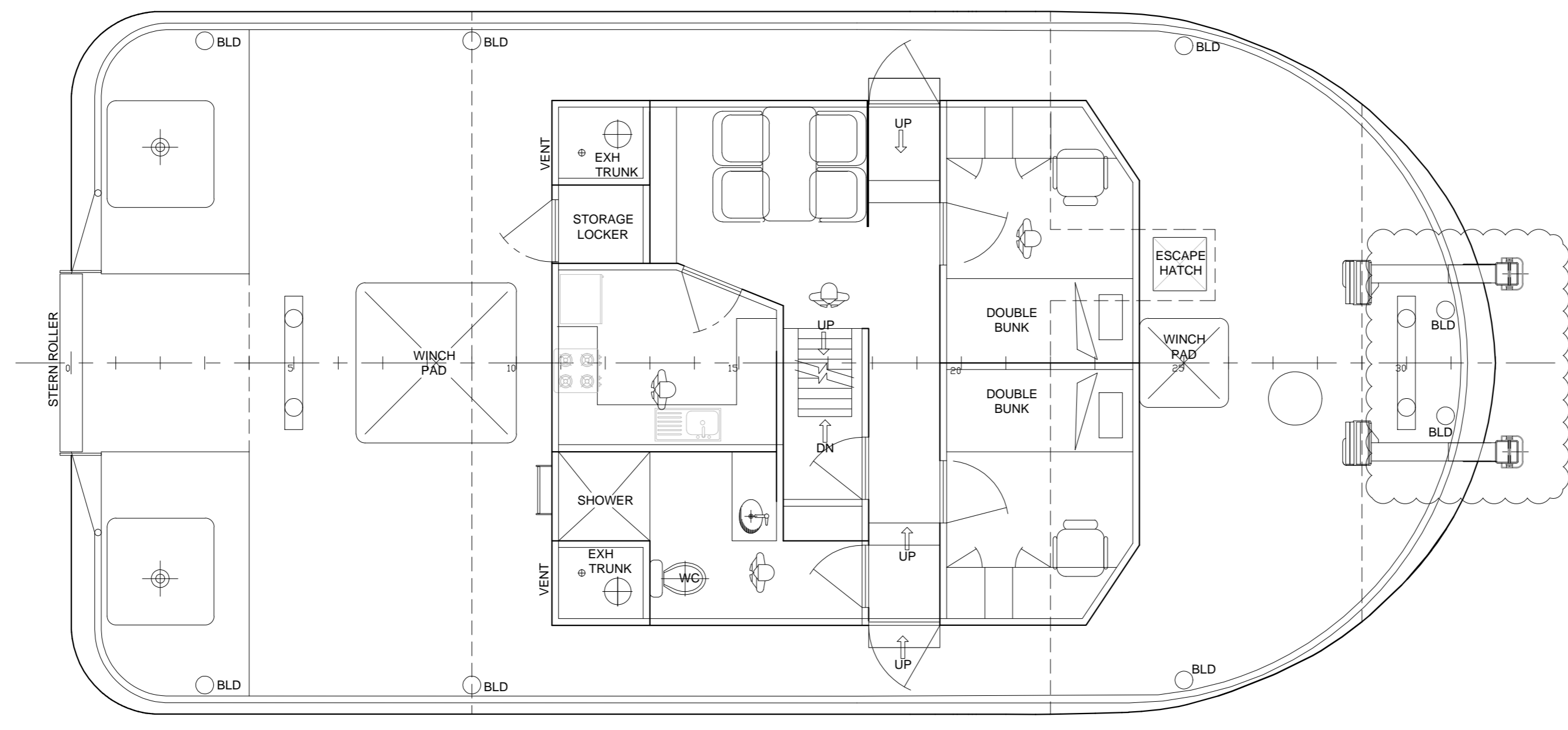


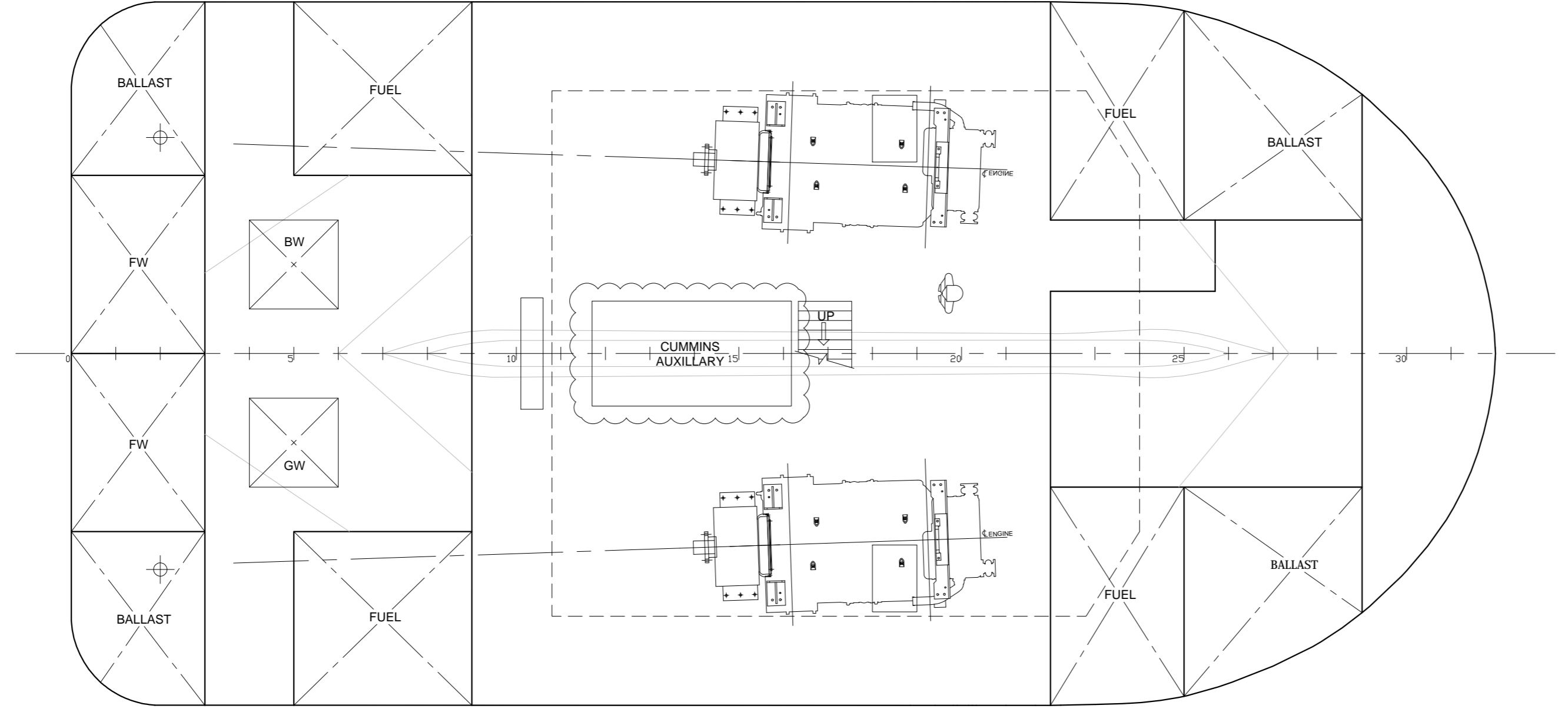
1 VIEW : PROFILE
Scale: 1:50



2 VIEW : BRIDGE DECK PLAN
Scale: 1:50



3 VIEW : MAIN DECK PLAN
Scale: 1:50



4 VIEW : LOWER DECK PLAN
Scale: 1:50

PRINCIPAL PARTICULARS

LENGTH, L _{0/a}	16.00 M
BREADTH	7.900 M
DEPTH (MOULDED)	3.090 M
DRAFT (MAX.)	2.200 M
FREEBOARD	0.850 M
DISPLACEMENT (MAX)	125.0 Tonnes
FUEL	40000 Ltrs.
WATER	12000 Ltrs.
MOTORS (TWIN)	2 X KTA 38 M
HORSEPOWER	1000 HP @ 1800 RPM
GEARBOX	ADVANCE HCD600- 4.43:1
AUXILIARIES	2 X 50KVA
HYDRAULICS	JOHN DEER
KEEL COOLING	-
PROPELLER SHROUD	1500mm TYPE 37
CRUISE SPEED	8 Knots
CLASS	2C:12 PERSONS 2C: 4 PERSONS D/N

ANCHOR NOTES

- VESSEL ANCHOR REQUIREMENTS:
- 2x109 HIGH HOLDING POWER ANCHORS
 - 110mx16mm ANCHOR CHAIN

NAVIGATION LIGHTS AND SHAPES NOTES

- NAVIGATION LIGHTS AND SHAPES AS PER NSCV
VESSEL REQUIRES THE FOLLOWING NAVIGATION LIGHTS WHEN UNDER WAY:
- MASTHEAD LIGHT VISIBLE FROM 3 NAUTICAL MILES
 - SIDE LIGHTS VISIBLE FROM 2 NAUTICAL MILES
 - STERN LIGHT VISIBLE FROM 2 NAUTICAL MILES

VESSEL REQUIRES THE FOLLOWING NAVIGATION LIGHTS AND SHAPES WHEN UNDERTAKING TOWING OPERATIONS:

- TWO MAST HEAD LIGHTS IN A VERTICAL LINE VISIBLE FROM 3 NAUTICAL MILES
- SIDE LIGHTS VISIBLE FROM 2 NAUTICAL MILES
- STERN LIGHT VISIBLE FROM 2 NAUTICAL MILES
- TOWING LIGHT ABOVE STERN LIGHT VISIBLE FROM 2 NAUTICAL MILES
- WHEN LENGTH OF TOW EXCEEDS 200M, A DIAMOND WHERE IT CAN BE BEST SEEN

VESSEL REQUIRES THE FOLLOWING NAVIGATION LIGHTS WHEN UNDERTAKING PUSHING OPERATIONS:

- TWO MAST HEAD LIGHTS IN A VERTICAL LINE VISIBLE FROM 3 NAUTICAL MILES
- SIDE LIGHTS VISIBLE FROM 2 NAUTICAL MILES
- STERN LIGHT VISIBLE FROM 2 NAUTICAL MILES

VESSEL REQUIRES THE FOLLOWING NAVIGATION LIGHTS AND SHAPES WHEN UNDERTAKING TOWING OPERATIONS THAT RESTRICT ABILITY TO MANOUVRE

- THREE ALL ROUND LIGHTS IN A VERTICAL LINE VISIBLE FROM 2 NAUTICAL MILES. THE HIGHEST AND LOWEST LIGHTS MUST BE RED AND MIDDLE LIGHT MUST BE WHITE
- THREE SHAPES IN A VERTICAL LINE WHERE THEY CAN BE BEST SEEN. THE HIGHEST AND LOWEST SHAPES MUST BE BALLS AND MIDDLE LIGHT MUST BE A DIAMOND
- SIDE LIGHTS VISIBLE FROM 2 NAUTICAL MILES
- STERN LIGHT VISIBLE FROM 2 NAUTICAL MILES

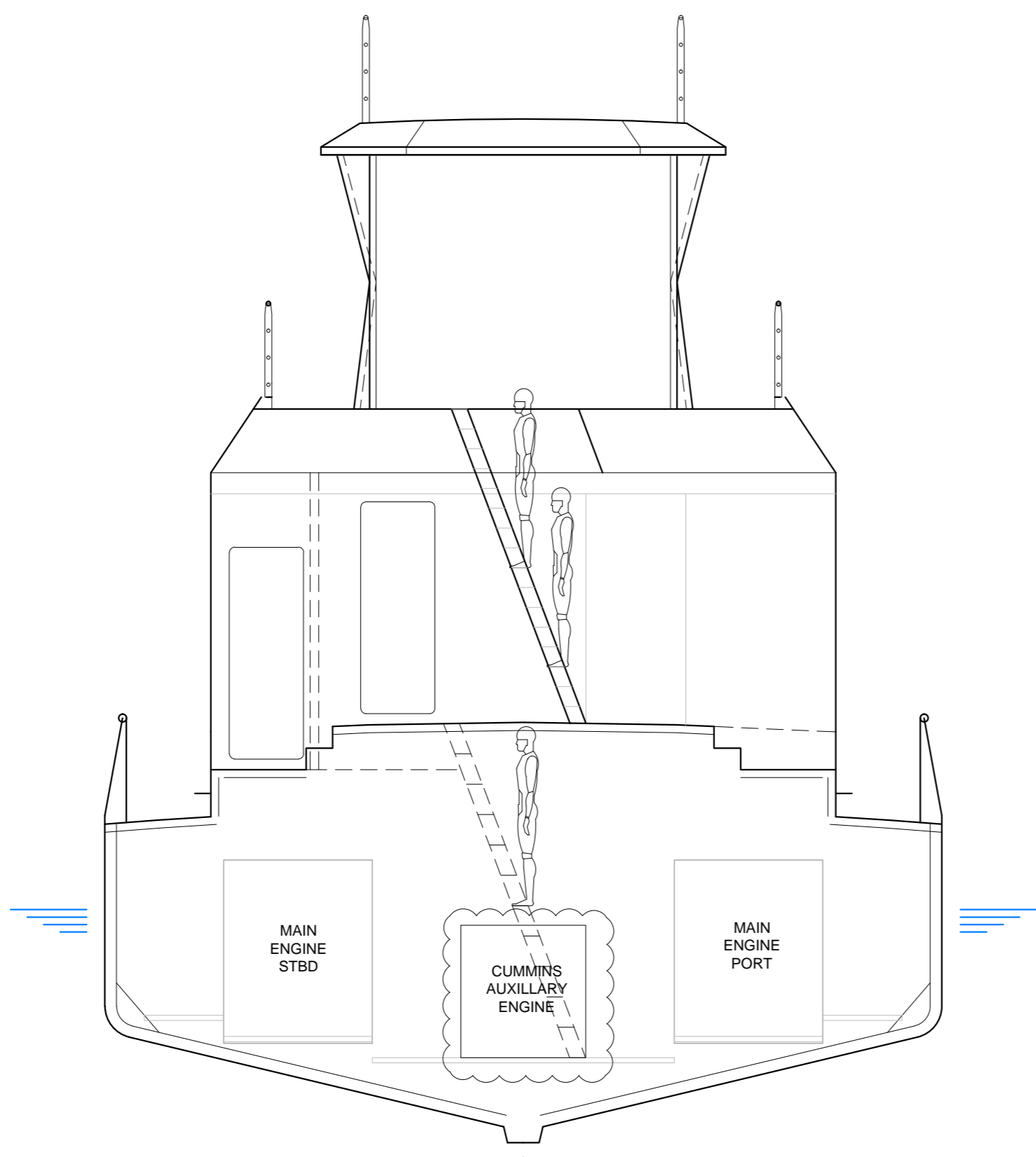
THIS DESIGN INCLUDING SPECIFICATIONS DRAWINGS & ITS CONTENTS ARE THE EXCLUSIVE PROPERTY OF NAUST ARCHITECTS AUSTRALIA & IS UNLAWFUL TO REPRODUCE OR TRANSMIT IN ANY FORM OR BY ANY MEANS, WITH OR WITHOUT PERMISSION IN WRITING FROM NAUST ARCHITECTS AUSTRALIA. THE RECIPIENT AGREES NOT TO DISCLOSE TO ANY OTHER PARTY INFORMATION HEREIN, NOR TO USE SUCH INFORMATION FOR ANY OTHER PROJECT WITHOUT THE WRITTEN CONSENT OF NAUST ARCHITECTS AUSTRALIA.

REV	REVISION NOTES	DATE	SIGN	CHECK	REV	REVISION NOTES	DATE	SIGN	CHECK
E	GENSET CHANGES, PUSHER ADDITIONS AND NOTES ADDED	24/02/14	AMB	JP					
D	HAND RAIL & ROOF MODS	26/9/13	NB	JP					
C	CLIENT AMENDMENTS INCORPORATED	4/7/13	NB	JP					
B	AMENDMENTS & TIDY UP	20/5/13	NB	JP					
A	NEW SUPERSTRUCTURE LAYOUT	11/5/13	AB	JP					

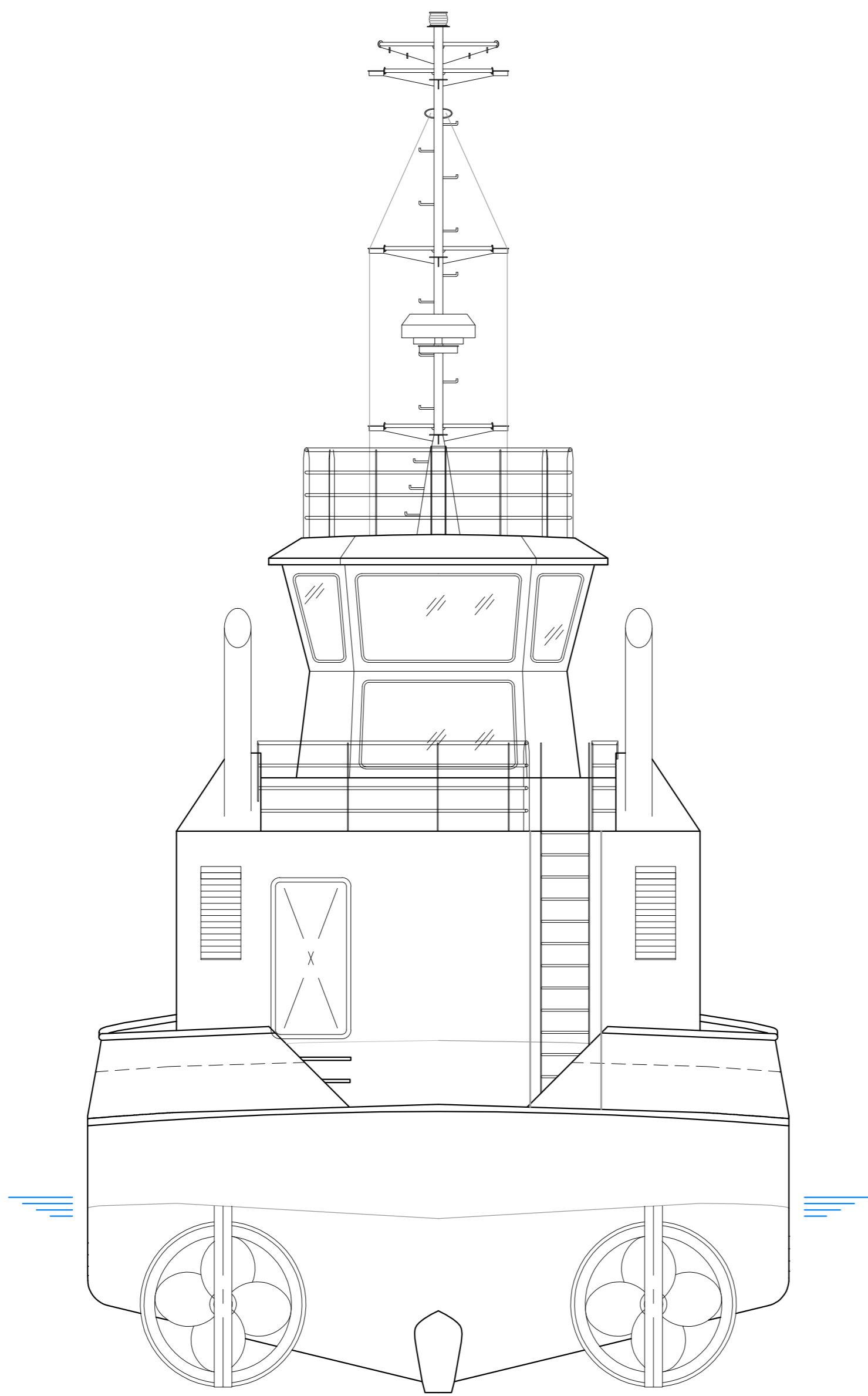


16m PUSHER TUG
HYDRO-TOW P/L

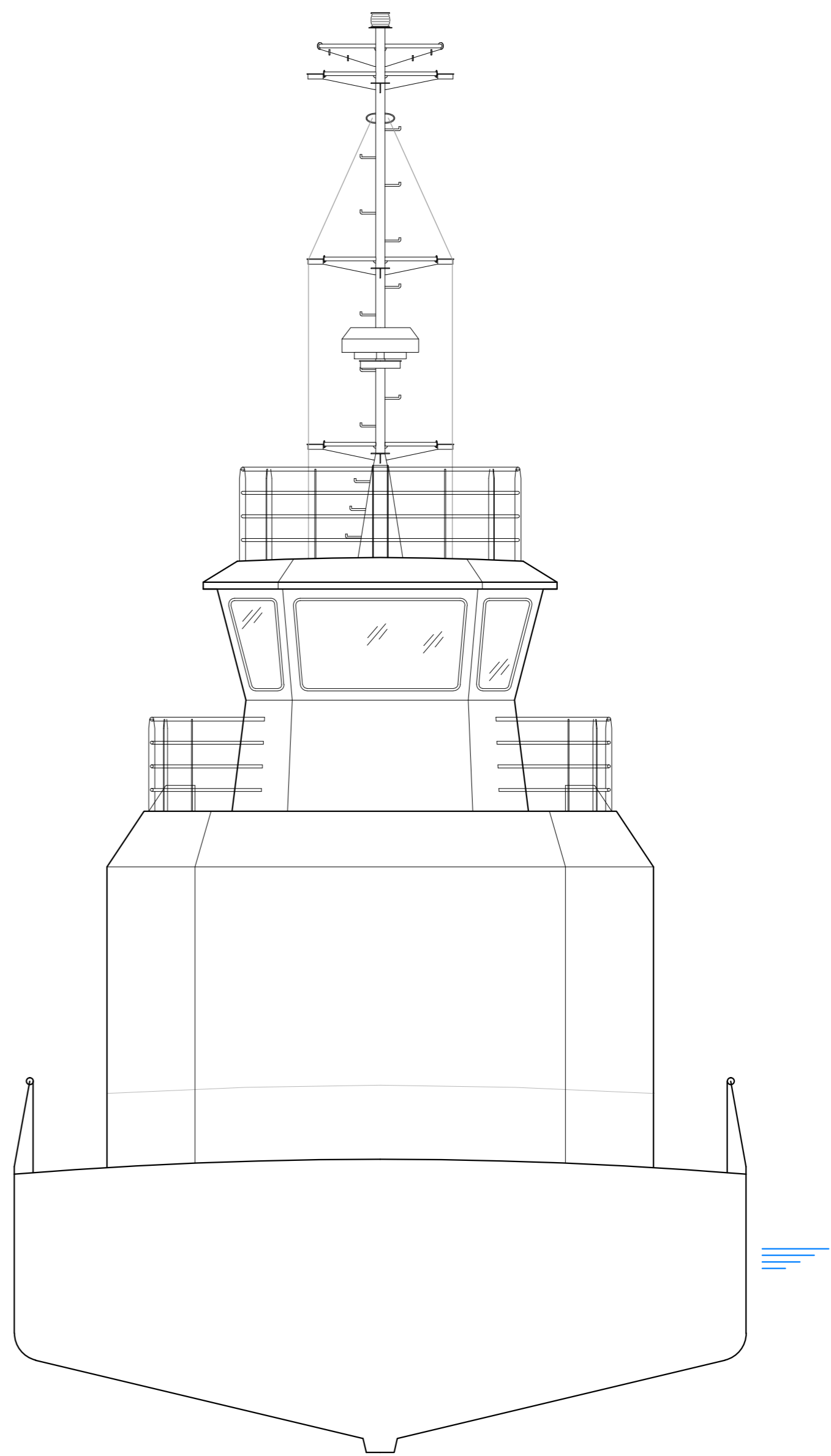
DESIGNED	RJ/NAA	CHECKED	JP	PROJECT #	P1334J01	DATE	25/9/13
P1334J01-A101		SHEET SIZE		A1	SCALE		AS SHOWN
GENERAL ARRANGEMENT 1				REVISION		D	



5 TYP SECTION LOOKING AFT
Scale: 1:50



6 STERN
Scale: 1:50



7 BOW
Scale: 1:50

THIS DESIGN INCLUDING SPECIFICATIONS DRAWINGS & ITS CONTENTS ARE THE EXCLUSIVE PROPERTY OF NAVAL ARCHITECTS AUSTRALIA & CANNOT BE REPRODUCED OR TRANSMITTED IN ANY FORM OR BY ANY MEANS, ELECTRONIC OR MECHANICAL, INCLUDING PHOTOCOPYING, RECORDING, OR BY ANY INFORMATION STORAGE AND RETRIEVAL SYSTEM, WITHOUT THE WRITTEN CONSENT OF NAVAL ARCHITECTS AUSTRALIA. THE RECIPIENT AGREES NOT TO DISCLOSE TO ANY OTHER PARTY INFORMATION HEREIN, NOR TO USE SUCH INFORMATION EXCEPT FOR THE PURPOSES CONTAINED HEREIN.

REV	REVISION NOTES	DATE	SIGN	CHECK	REV	REVISION NOTES	DATE	SIGN	CHECK
B	CLIENT AMENDMENTS INCORPORATED	4/7/13	NB	JP					
A	NEW SUPERSTRUCTURE LAYOUT	11/5/13	AB	JP					



16m PUSHER TUG
HYDRO-TOW P/L

DESIGNED	CHECKED	PROJECT #	DATE
RJ/NAA	JP	P1334J01	20/5/13
P1334J01-A102		SHEET SIZE	SCALE
		A1	AS SHOWN
GENERAL ARRANGEMENT 2			REVISION
			B